

Appendix G:

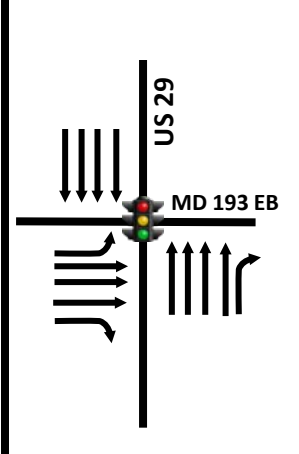
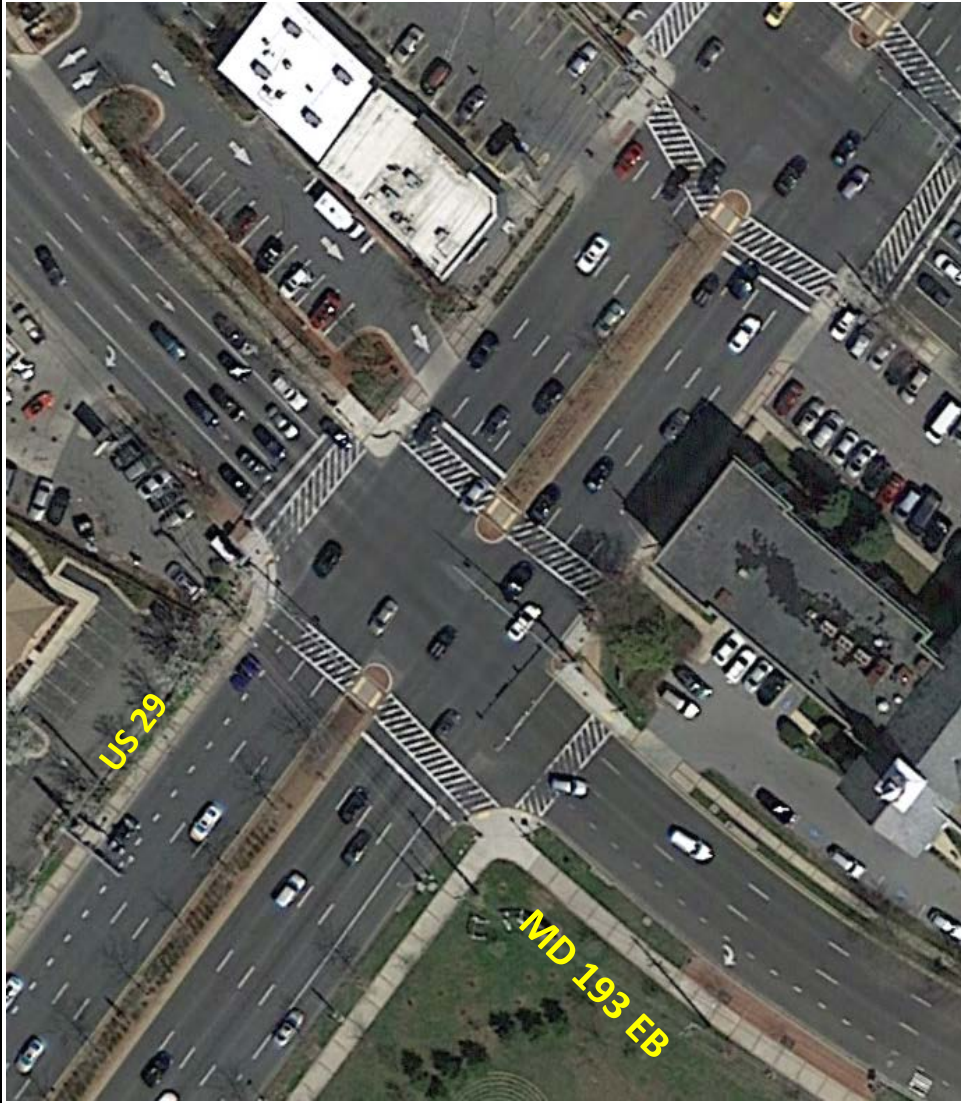
Intersection Diagrams

US 29 and MD 193 EB

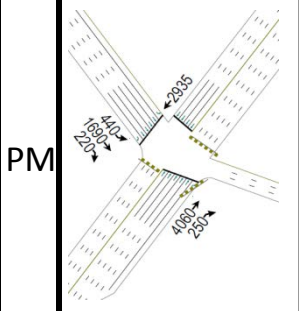
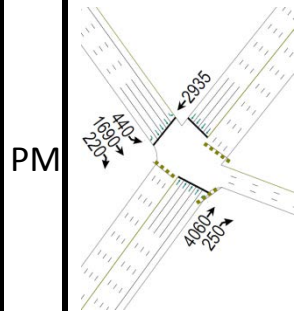
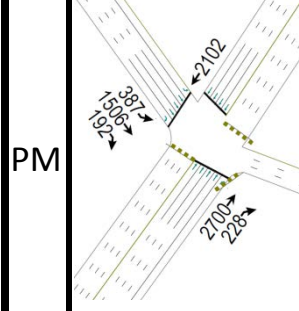
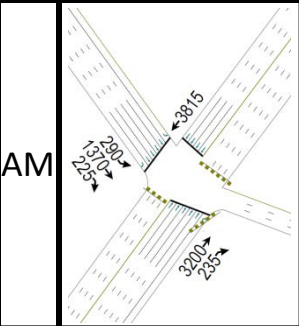
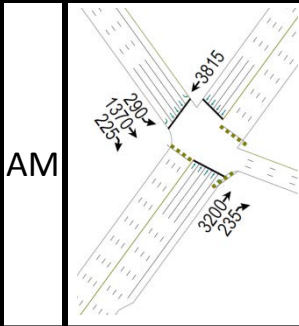
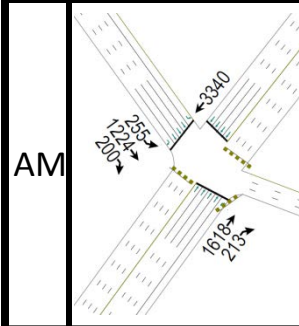
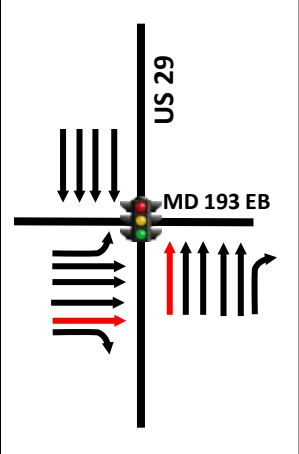
Existing Conditions

2040

2040 Improved

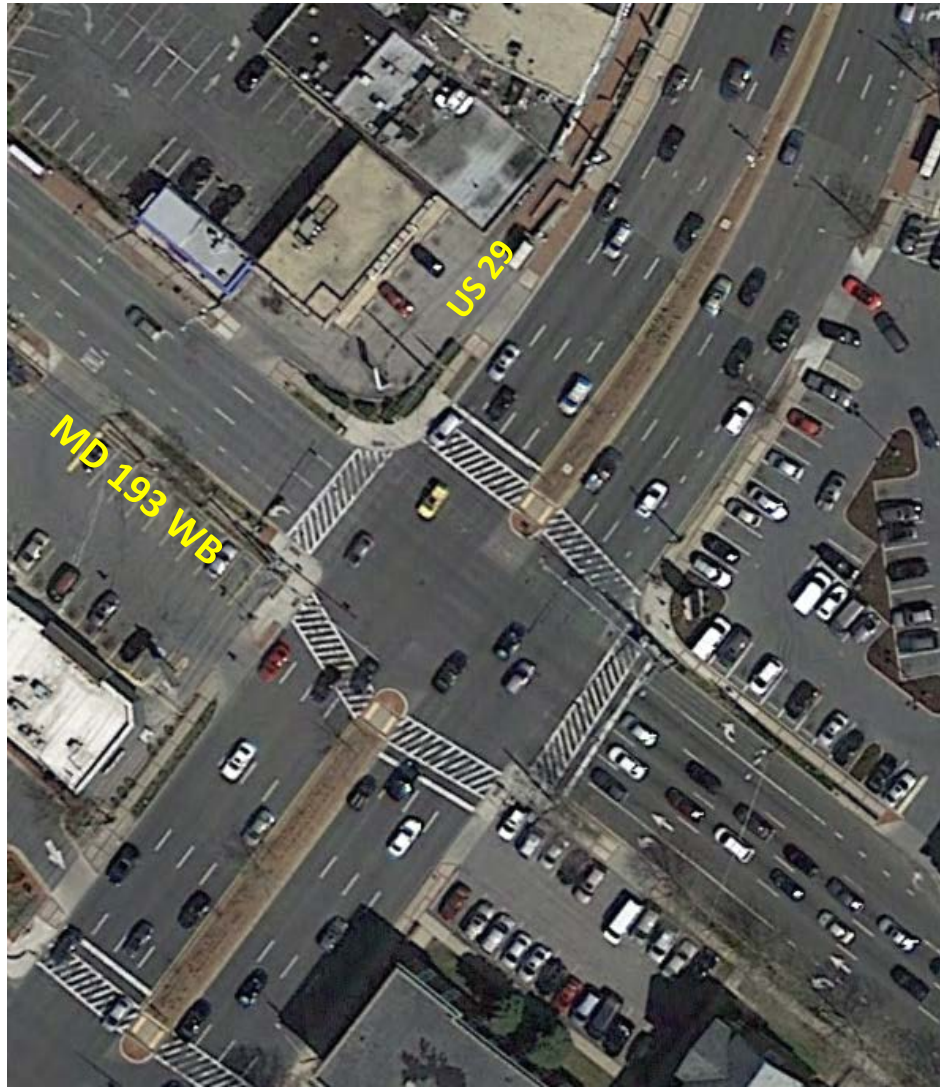


No Change

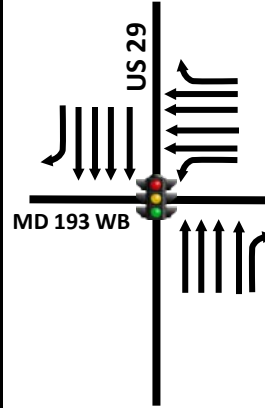


*Recommended Improvements █

US 29 and MD 193 WB



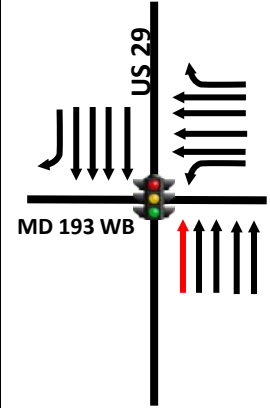
Existing Conditions



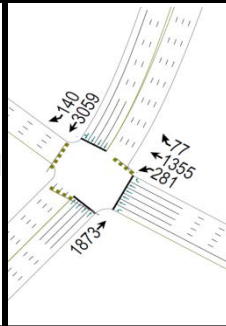
2040

No Change

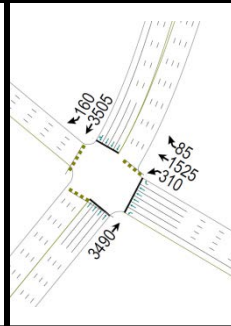
2040 Improved



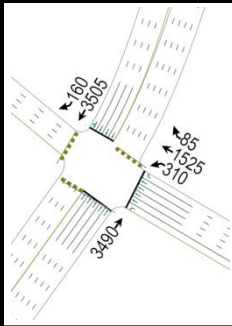
AM



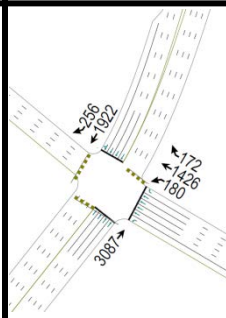
AM



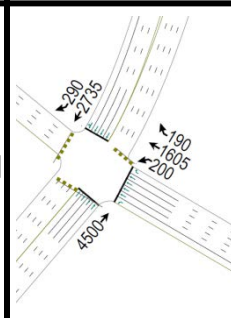
AM



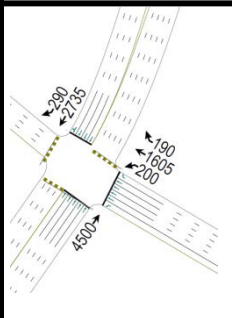
PM



PM



PM

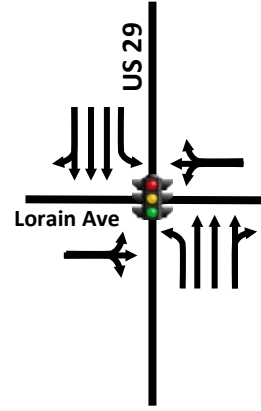


*Recommended Improvements █

US 29 and Lorain Avenue



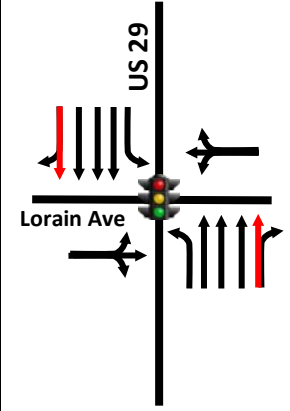
Existing Conditions



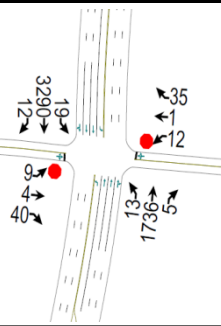
2040

No Change

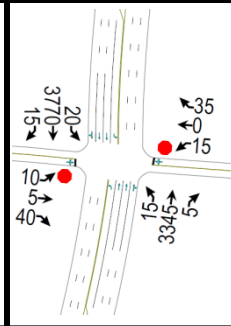
2040 Improved



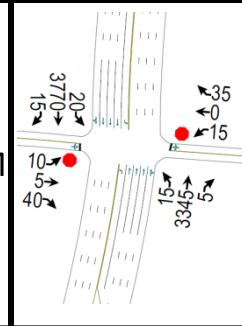
AM



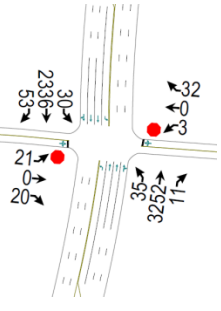
AM



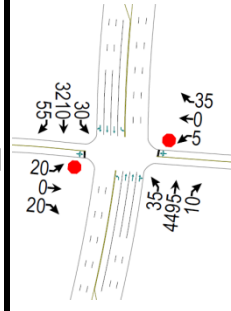
AM



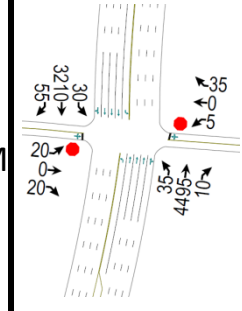
PM



PM



PM

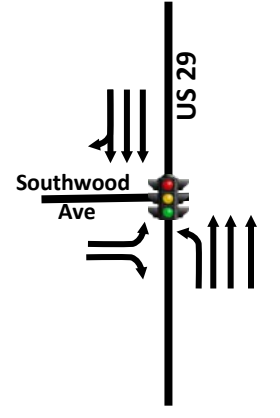


*Recommended Improvements █

US 29 and Southwood Avenue



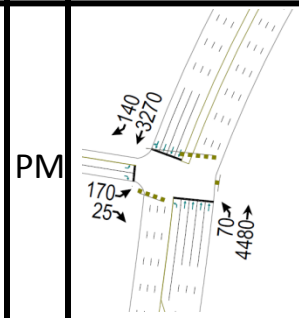
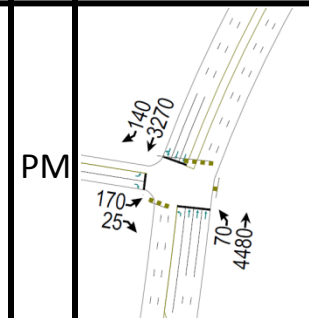
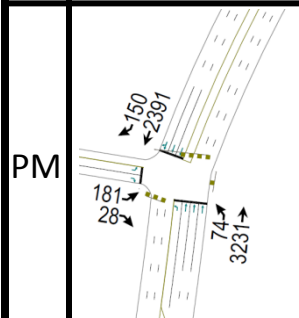
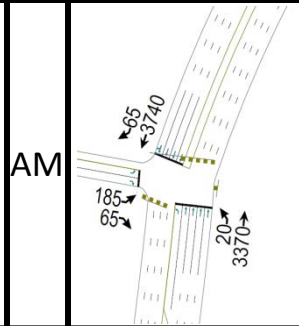
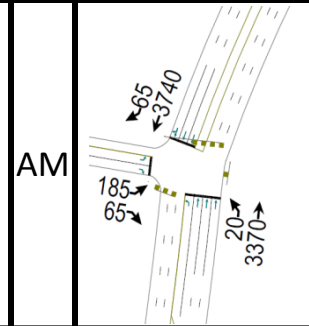
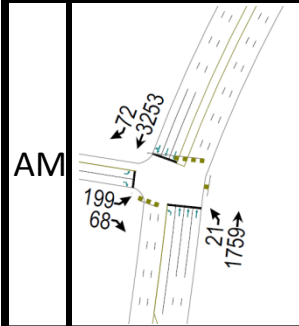
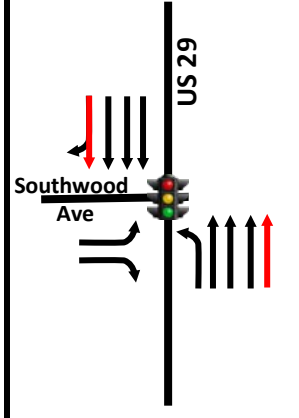
Existing Conditions



2040

No Change

2040 Improved



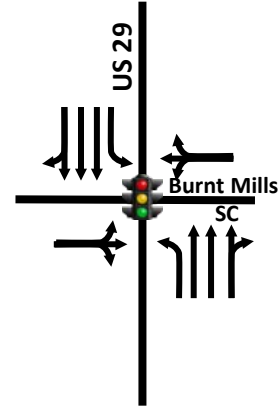
*Recommended Improvements █

US 29 and Burnt Mills Shopping Center

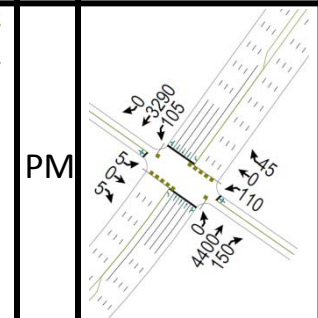
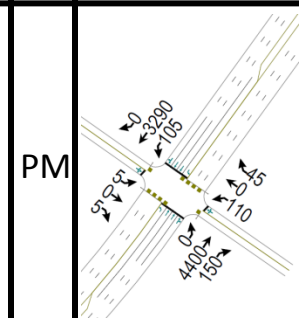
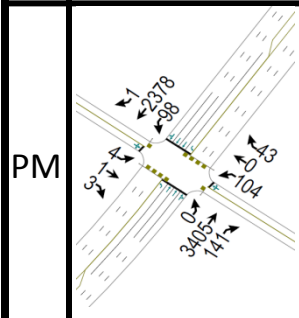
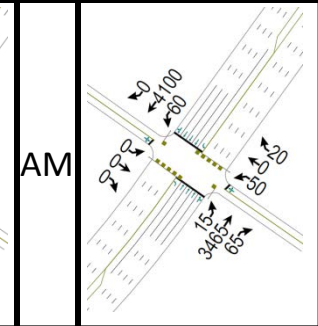
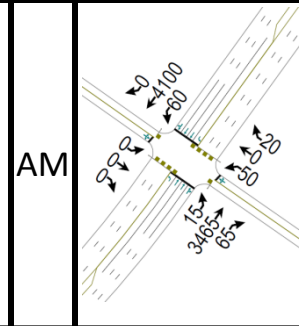
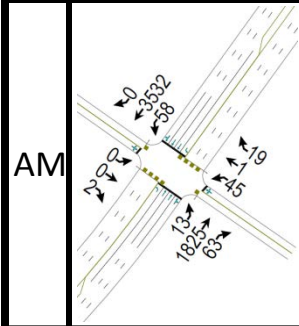
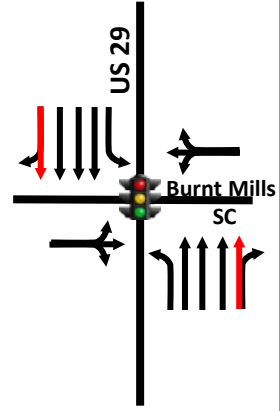
Existing Conditions

2040

2040 Improved

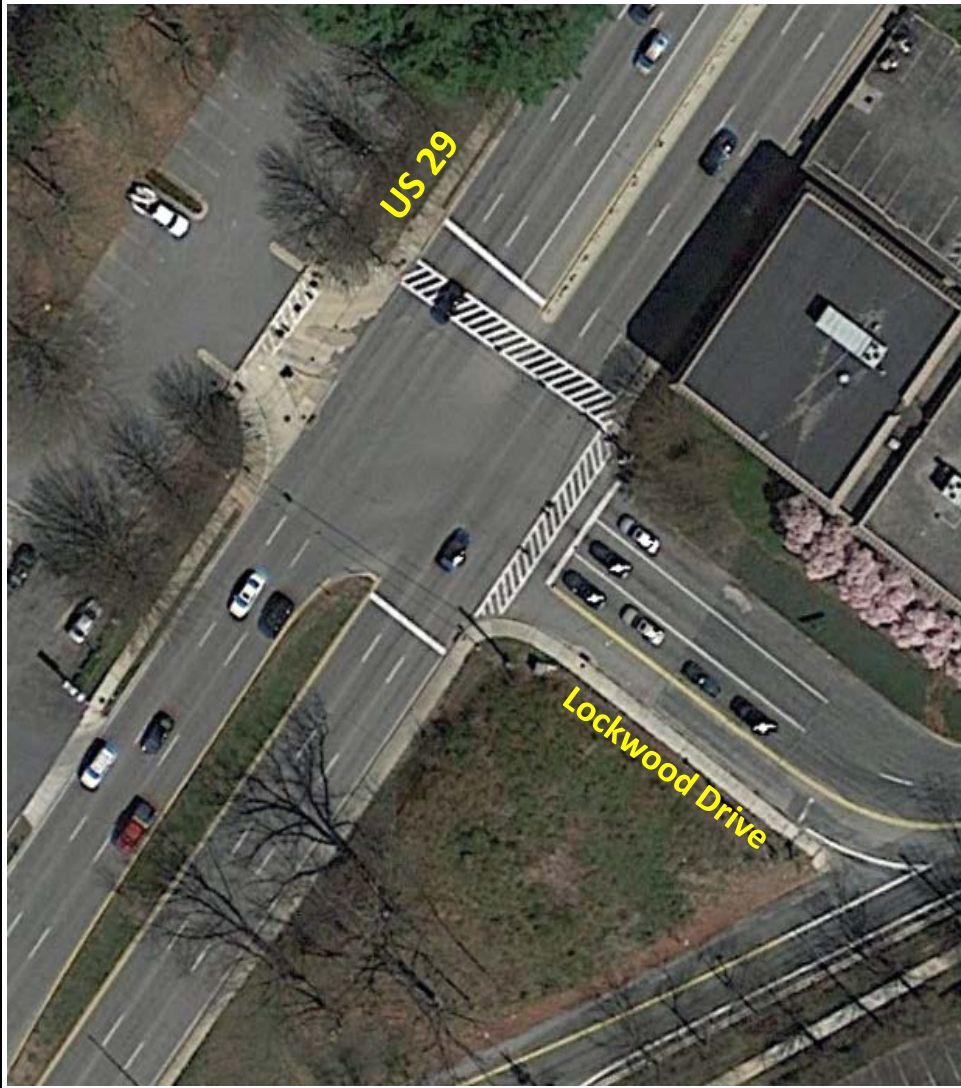


No Change

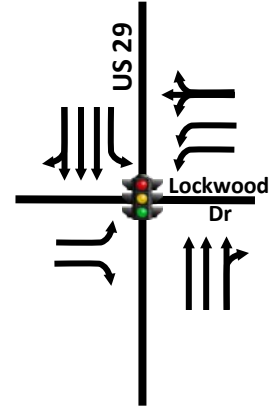


*Recommended Improvements █

US 29 and Burnt Mills Shopping Center



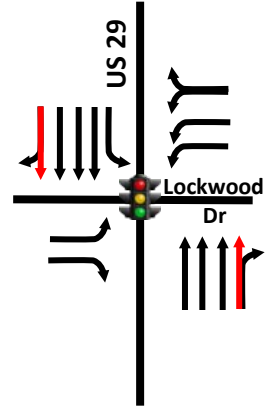
Existing Conditions



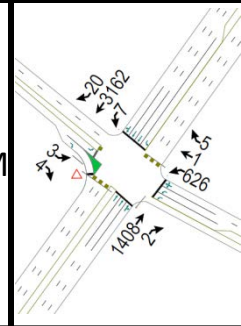
2040

No Change

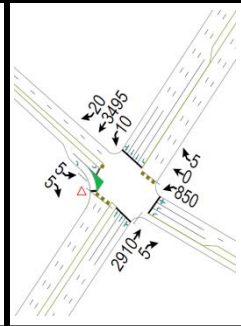
2040 Improved



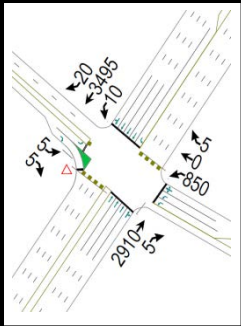
AM



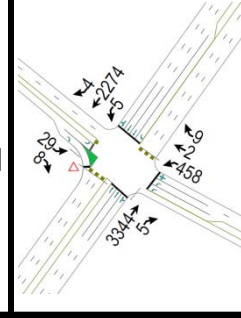
AM



AM



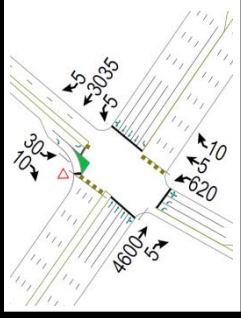
PM



PM



PM



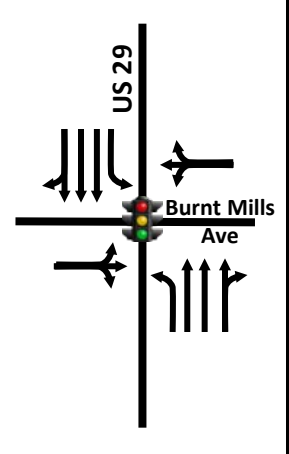
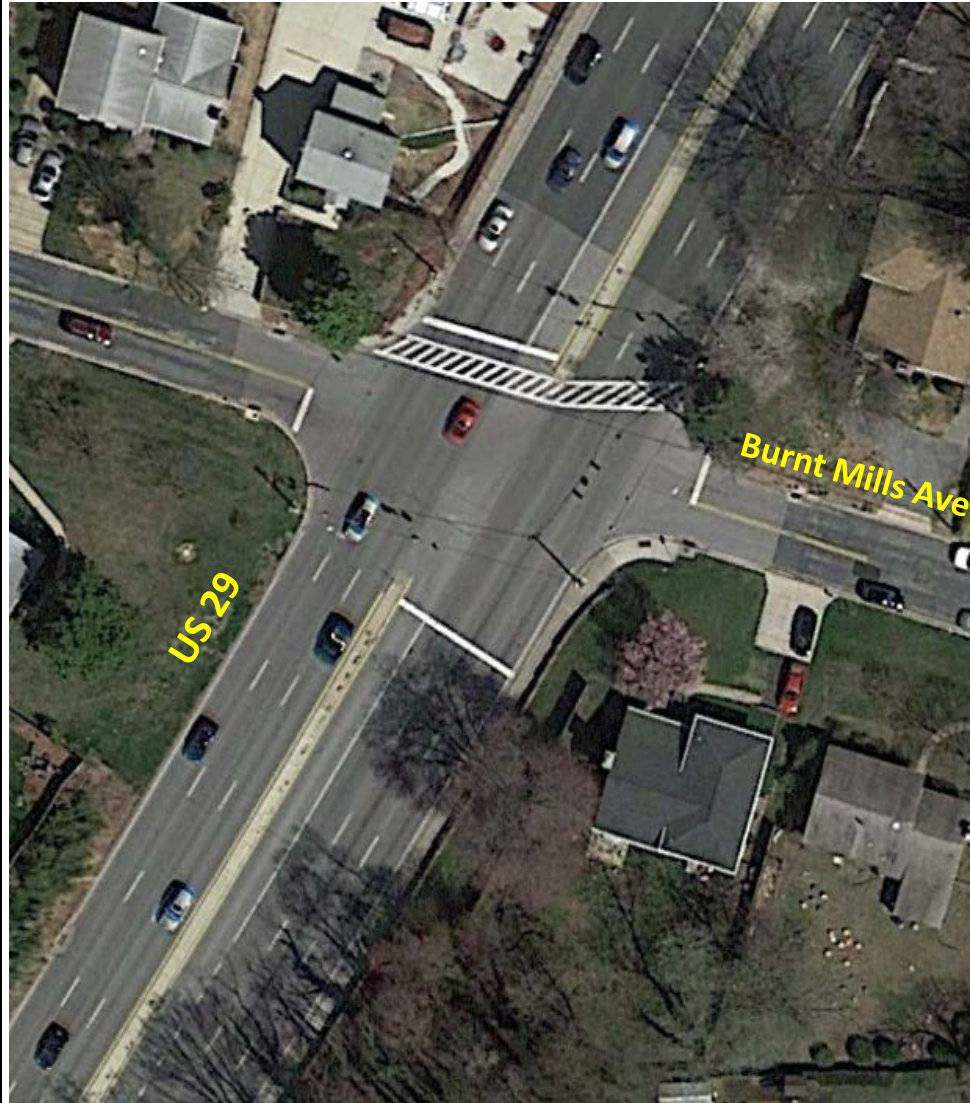
*Recommended Improvements █

US 29 and Burnt Mills Avenue

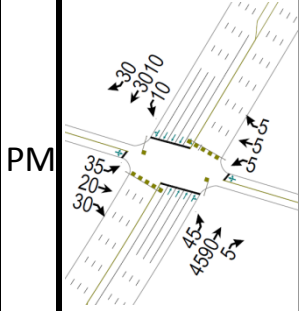
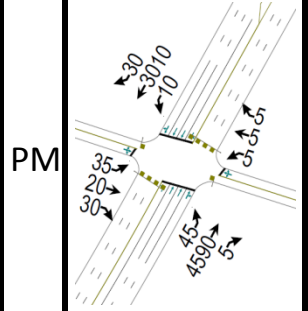
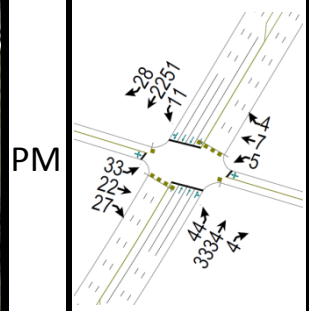
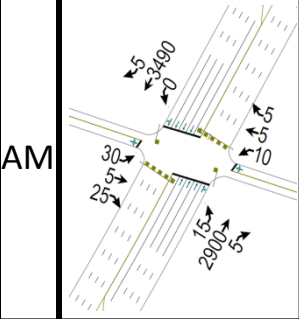
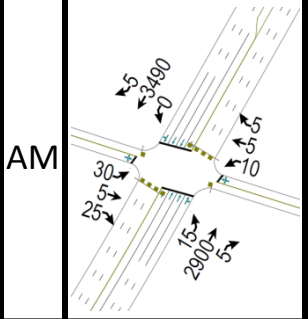
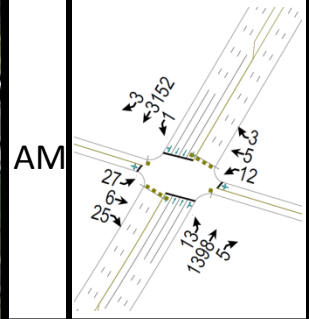
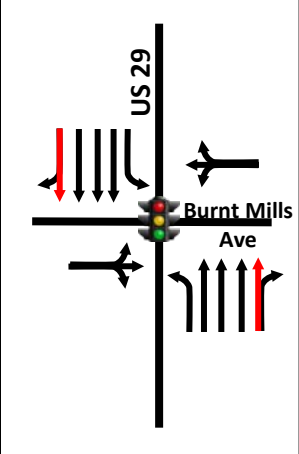
Existing Conditions

2040

2040 Improved



No Change



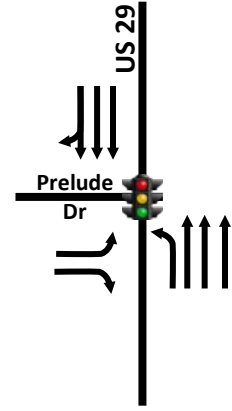
*Recommended Improvements █

US 29 and Prelude Drive

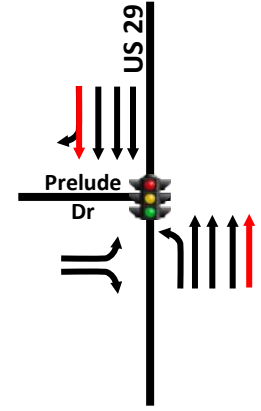
Existing Conditions

2040

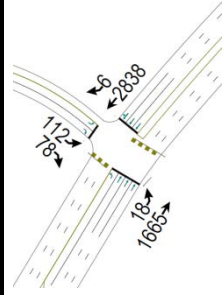
2040 Improved



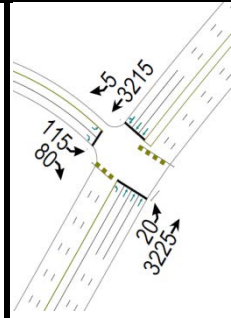
No Change



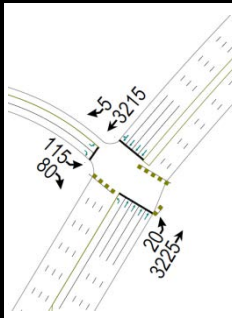
AM



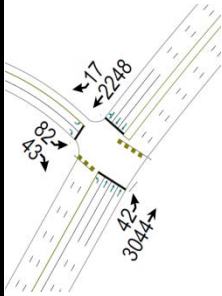
AM



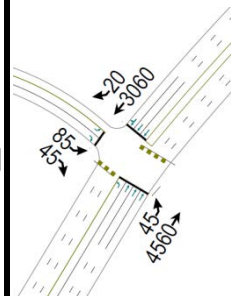
AM



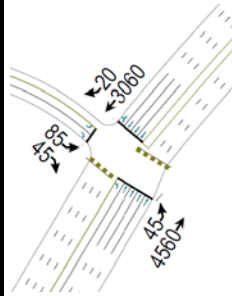
PM



PM

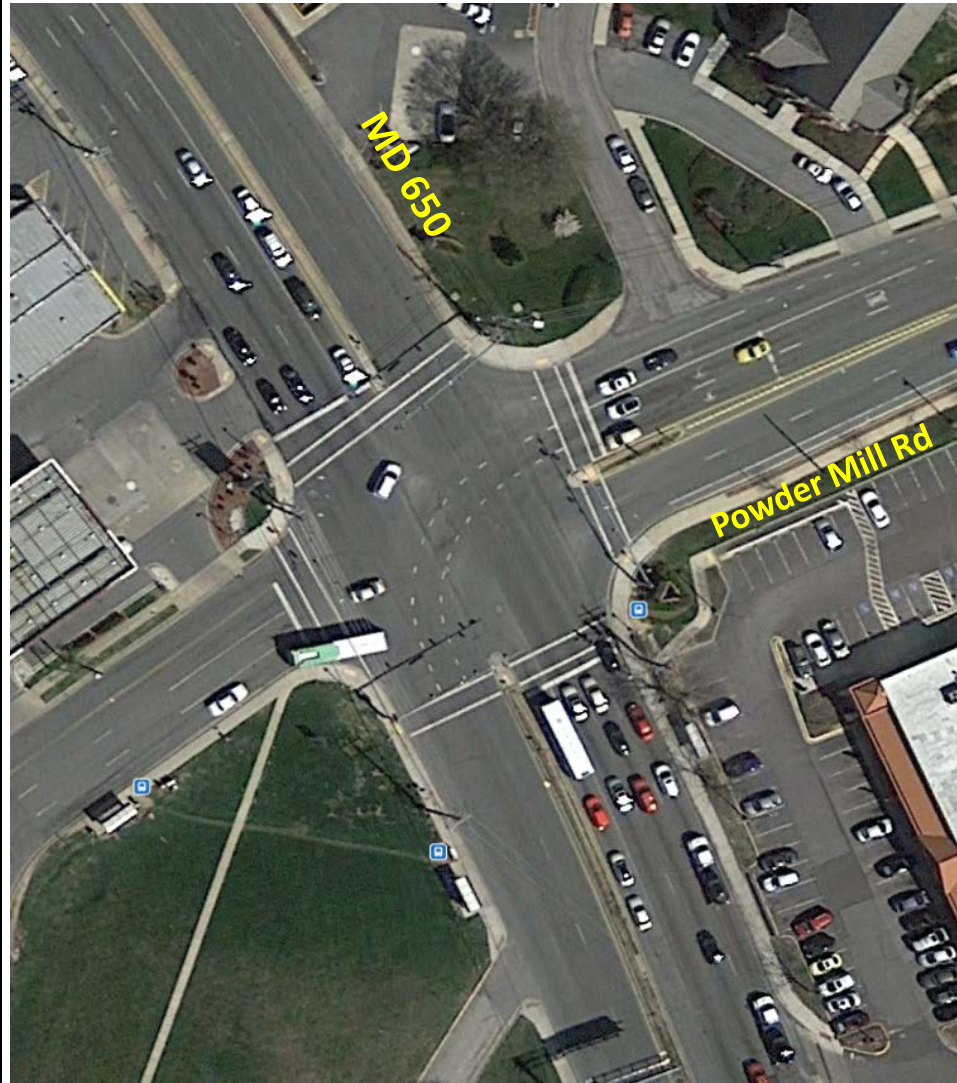


PM

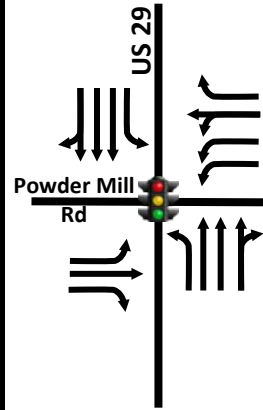


*Recommended Improvements █

MD 650 and Powder Mill Road



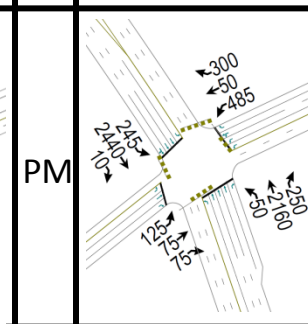
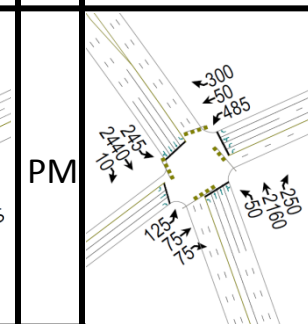
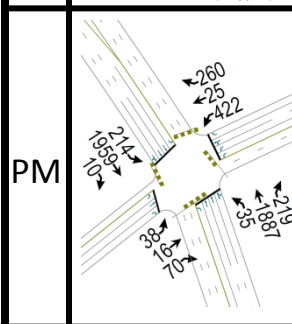
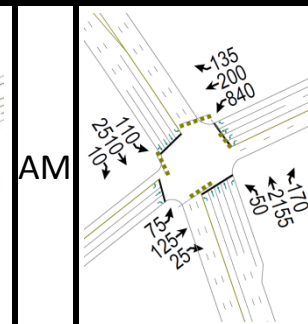
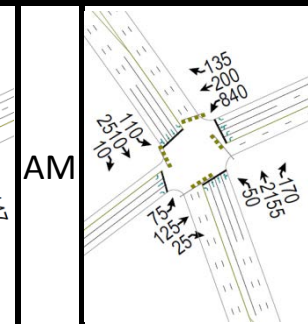
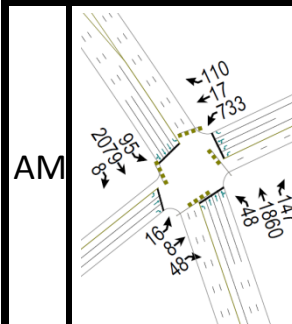
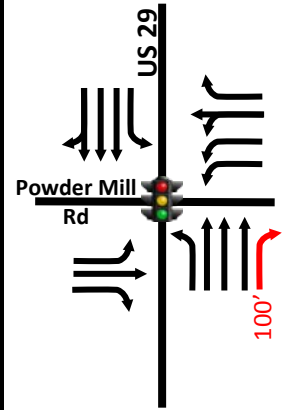
Existing Conditions



2040

No Change

2040 Improved



*Recommended Improvements █

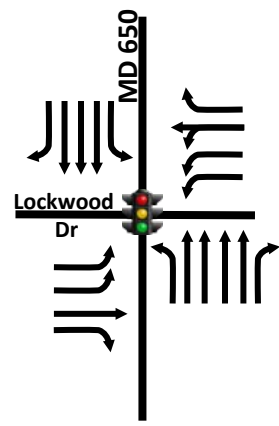
MD 650 and Lockwood Drive



© 2016 Europa Technologies

39°02'22.71" N 76°59'30.51" W elev 384 ft

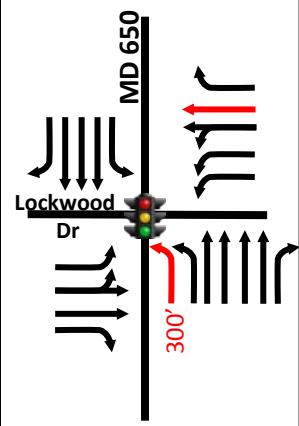
Existing Conditions



2040

No Change

2040 Improved



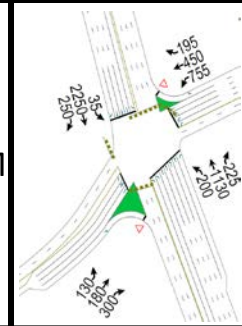
AM



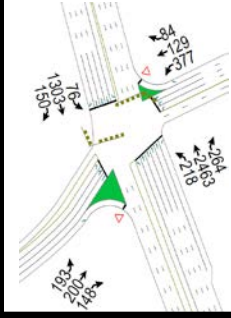
AM



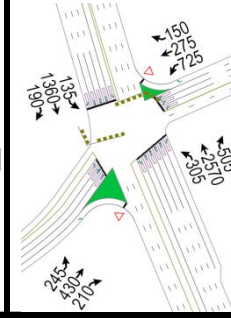
AM



PM



PM



PM

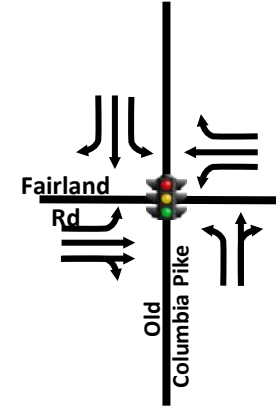


*Recommended Improvements █

Old Columbia Pike and Fairland Rd



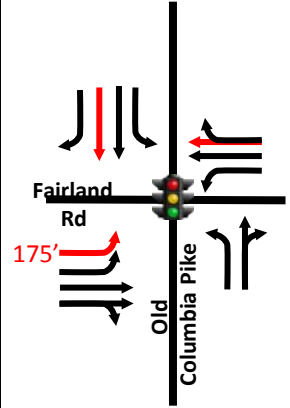
Existing Conditions



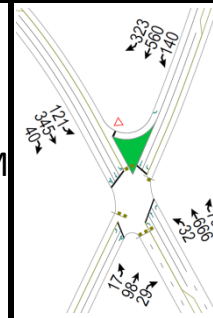
2040

No Change

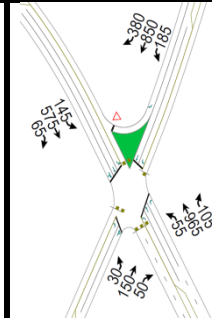
2040 Improved



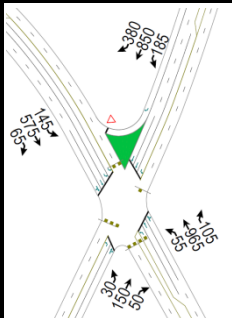
AM



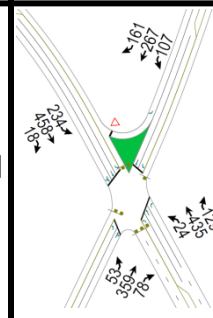
AM



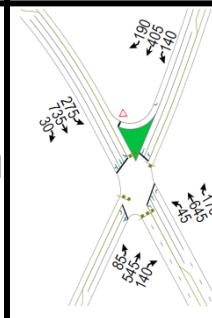
AM



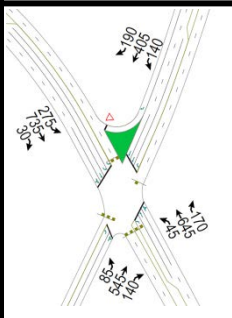
PM



PM

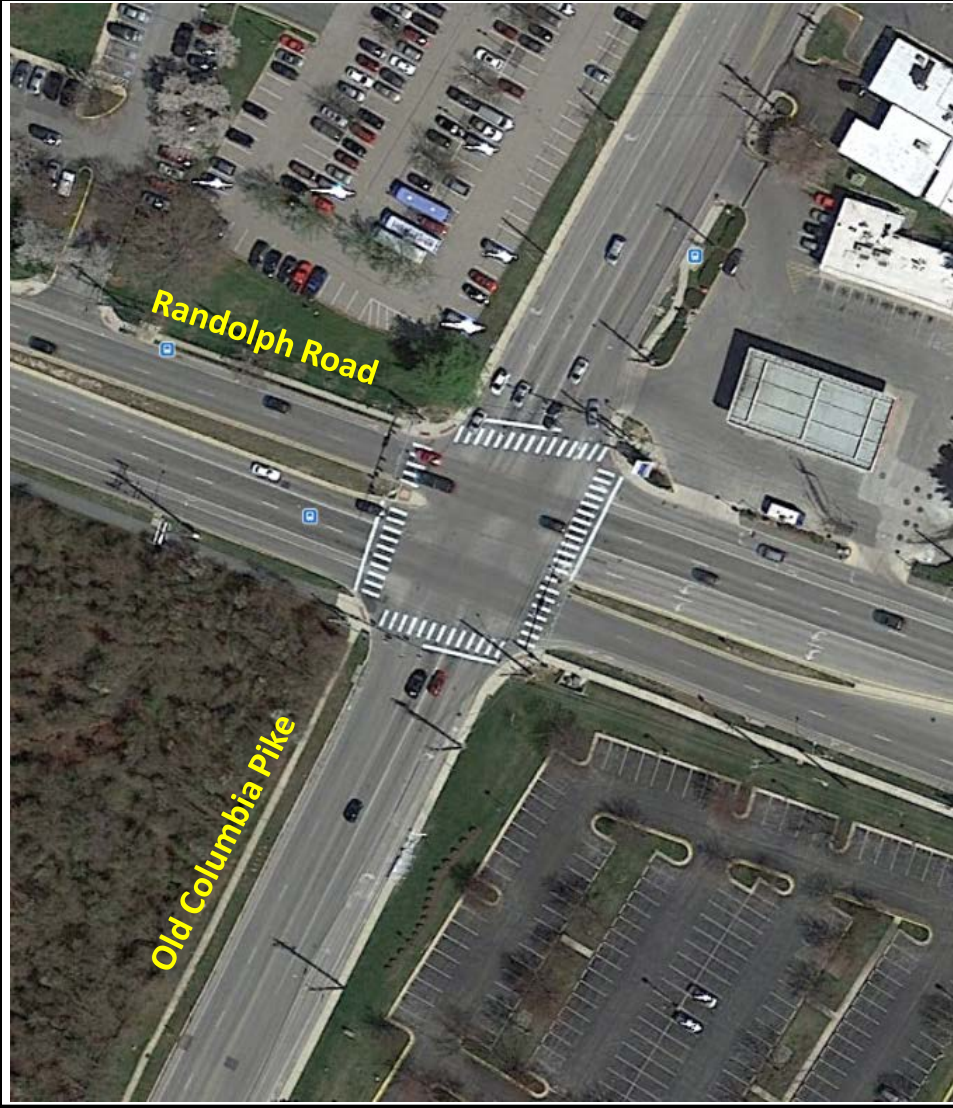


PM

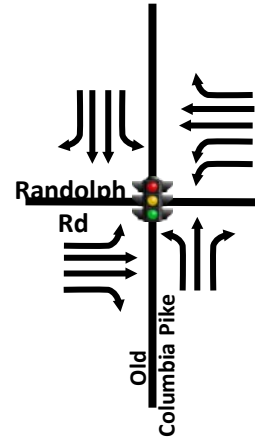


*Recommended Improvements █

Old Columbia Pike and Randolph Road



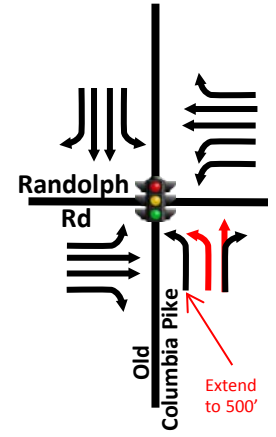
Existing Conditions



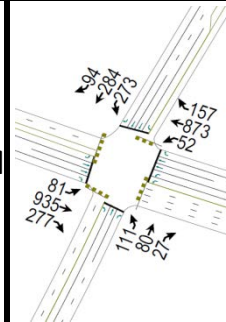
2040

No Change

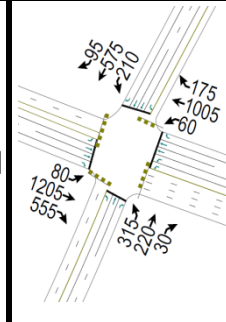
2040 Improved



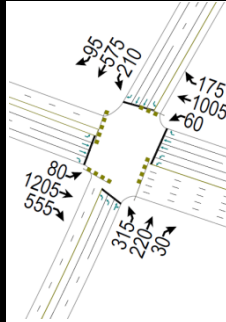
AM



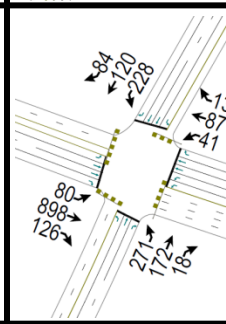
AM



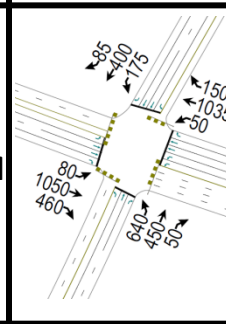
AM



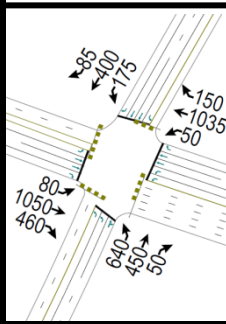
PM



PM



PM



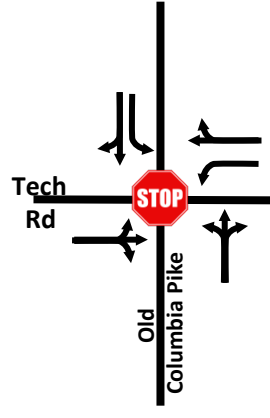
*Recommended Improvements



Old Columbia Pike and Tech Rd



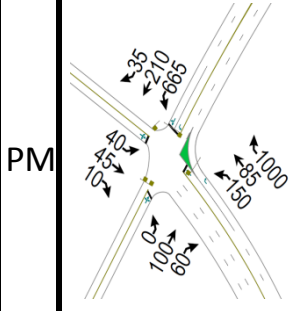
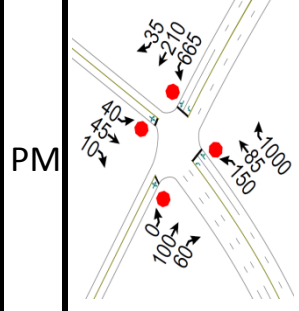
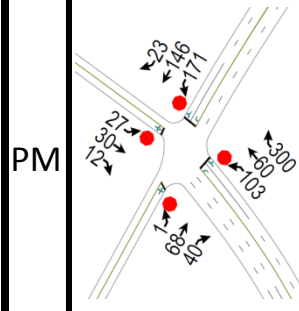
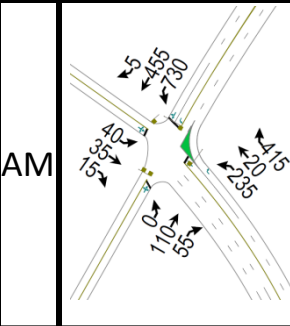
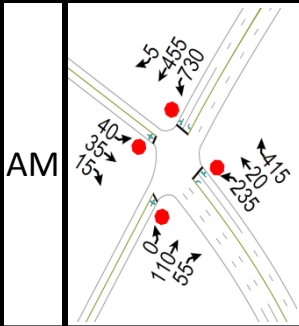
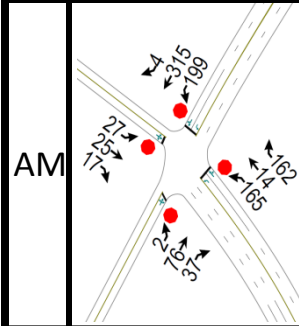
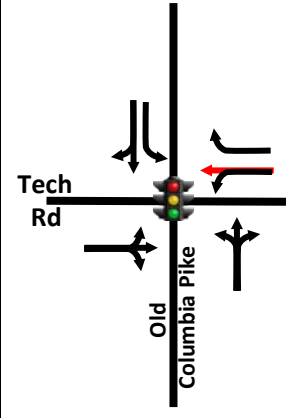
Existing Conditions



2040

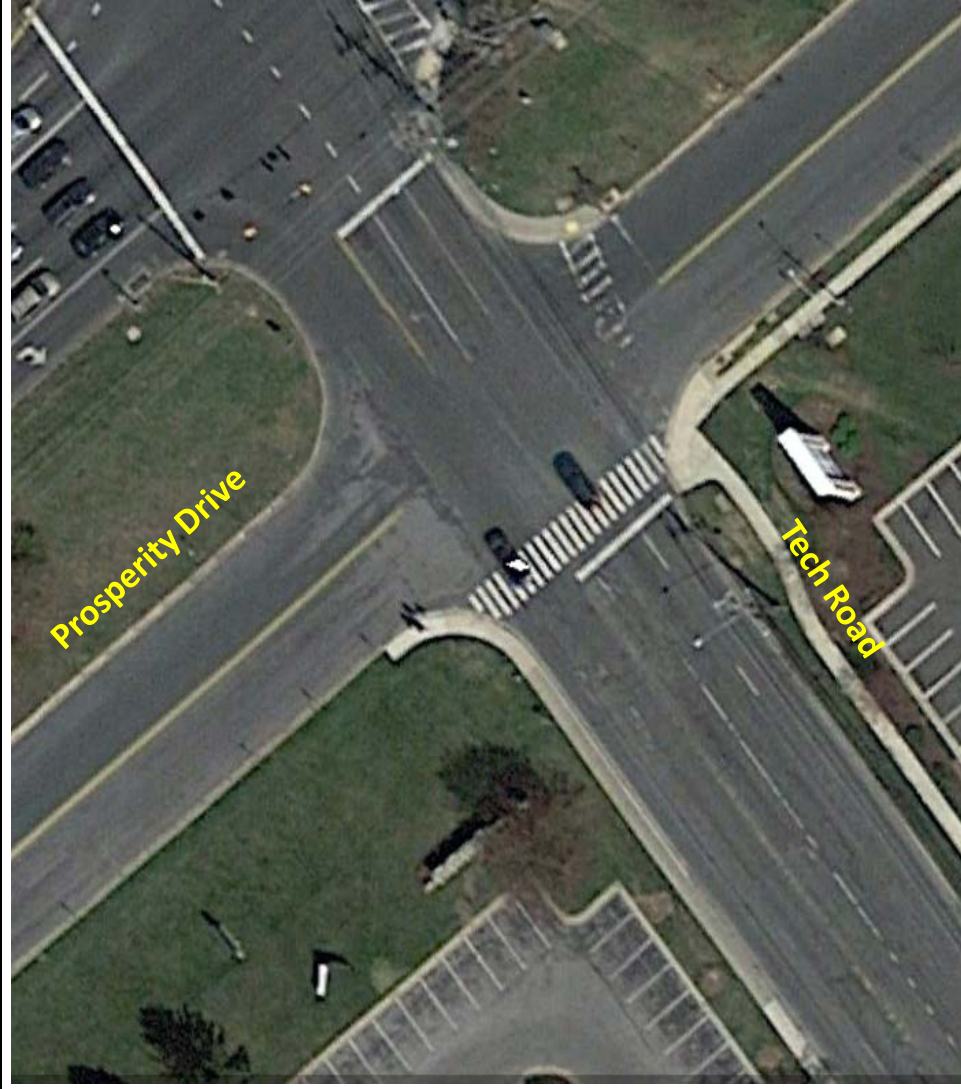
No Change

2040 Improved

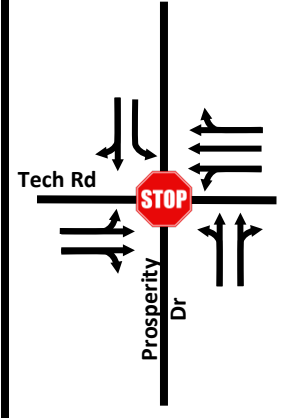


*Recommended Improvements █

Tech Road and Prosperity Dr / US 29



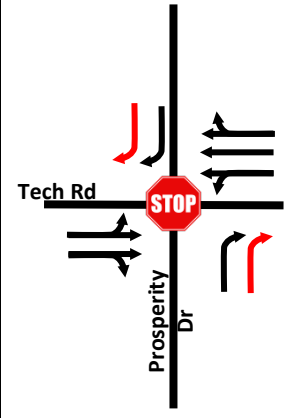
Existing Conditions



2040

No Change

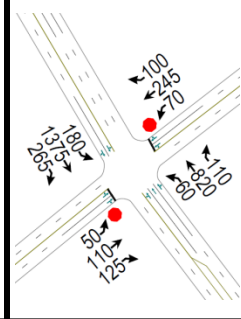
2040 Improved



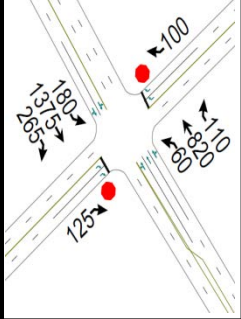
AM



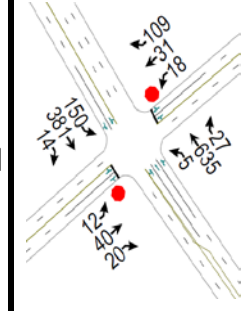
AM



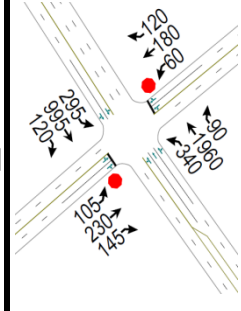
AM



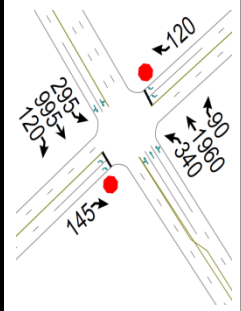
PM



PM

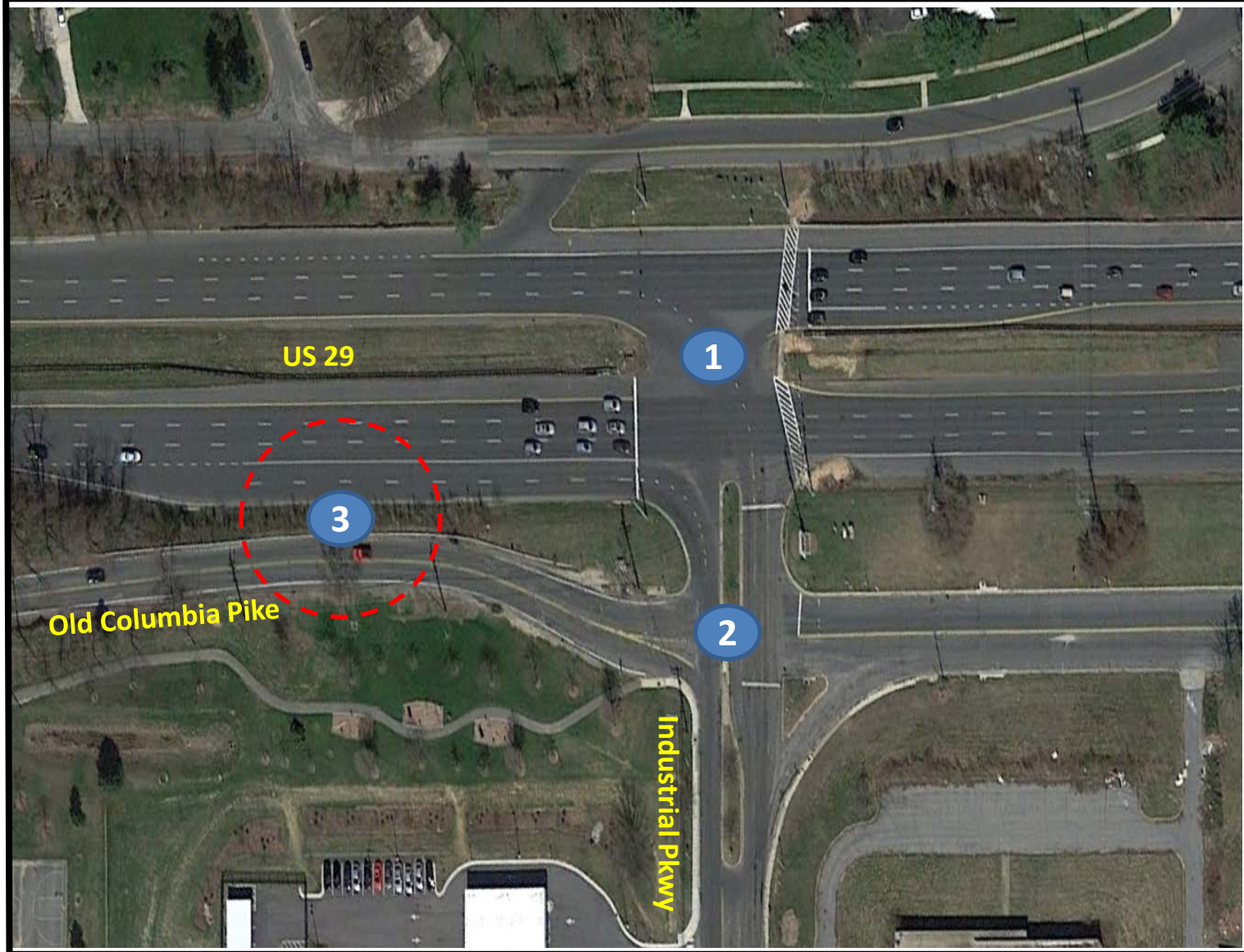


PM



*Recommended Improvements █

US 29/ Old Columbia Pike and Industrial Parkway



US 29 and Industrial Pkwy

Old Columbia Pike and Industrial Pkwy

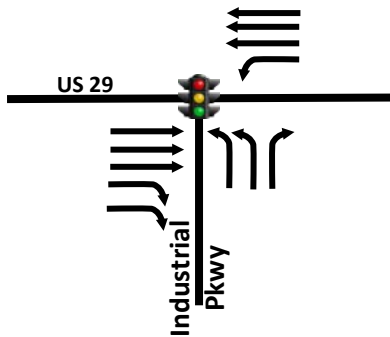
Old Columbia Pike and US 29 Spur

Existing Conditions

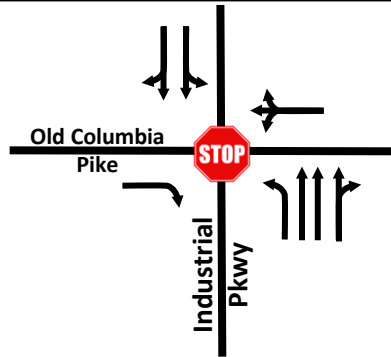
Existing Conditions

Existing Conditions

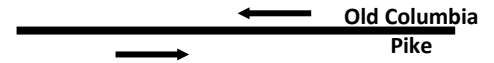
1



2



3

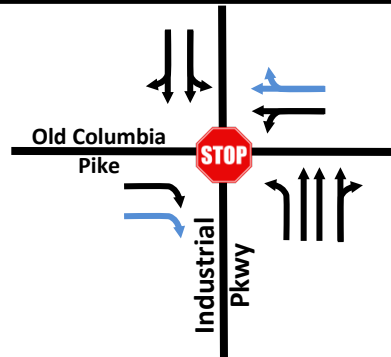


2040

2040

2040

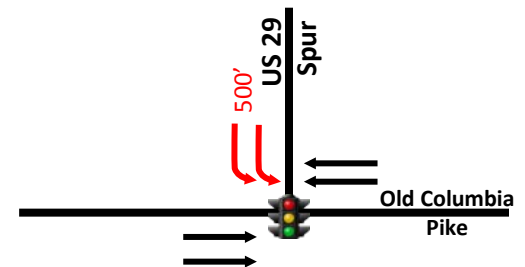
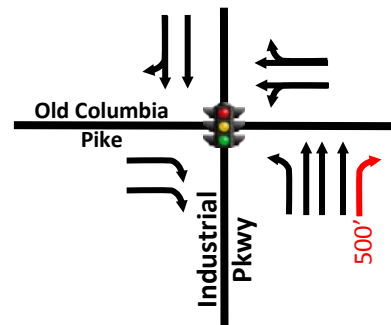
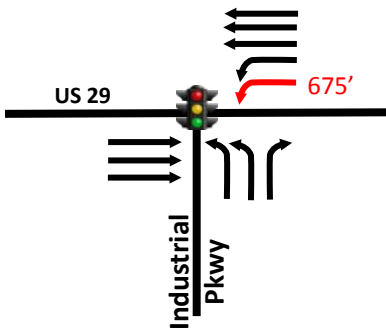
No Change



2040 Improved

2040 Improved

2040 Improved



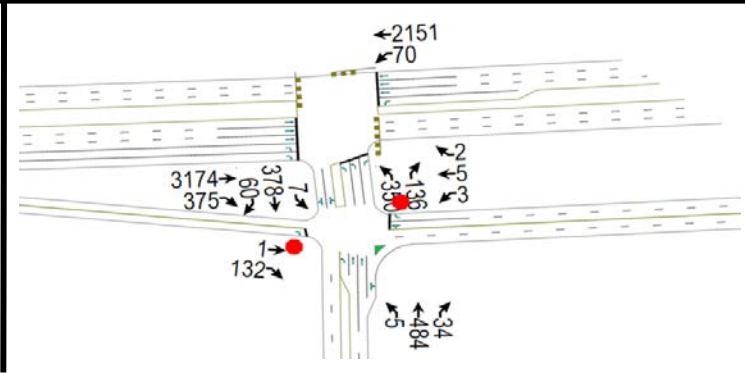
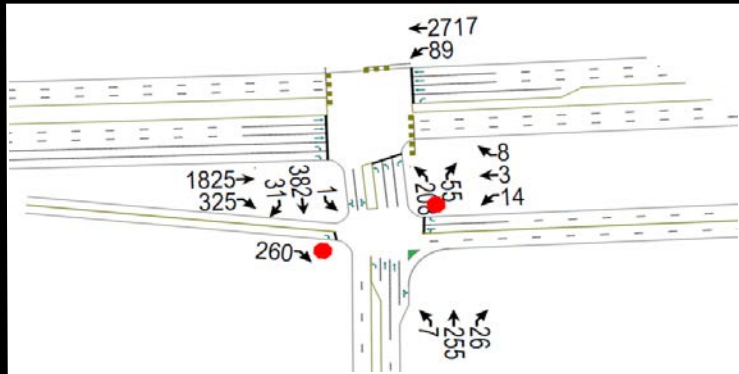
*White Oak Adopted Master Plan 2040 —
 *Recommended Improvements —

US 29/ Old Columbia Pike and Industrial Parkway

AM

Existing Conditions

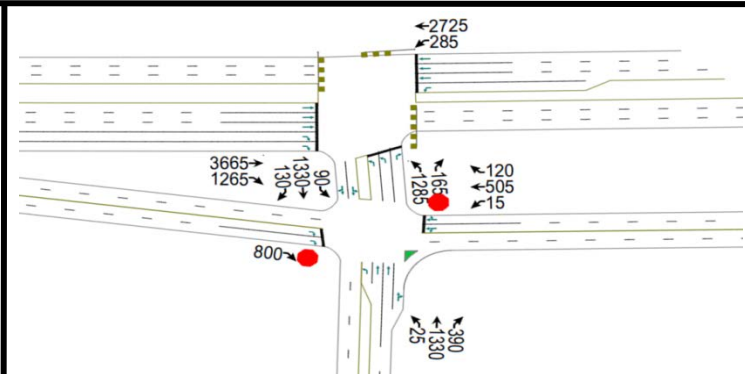
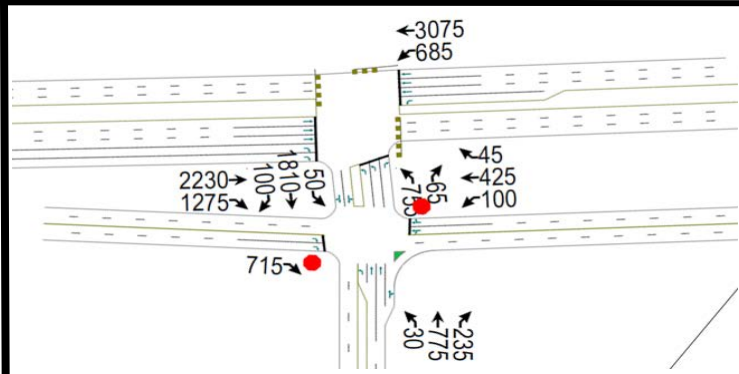
PM



AM

2040

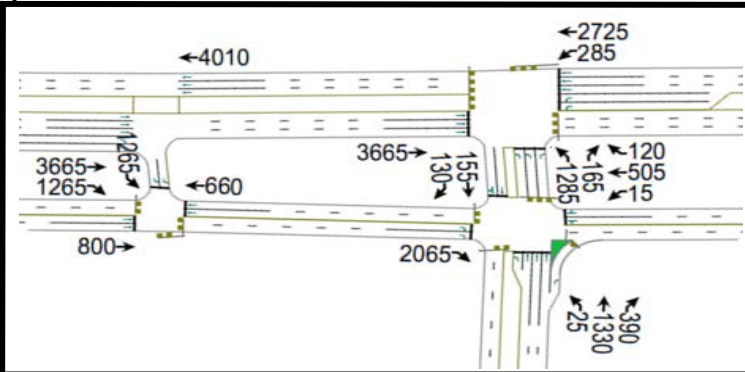
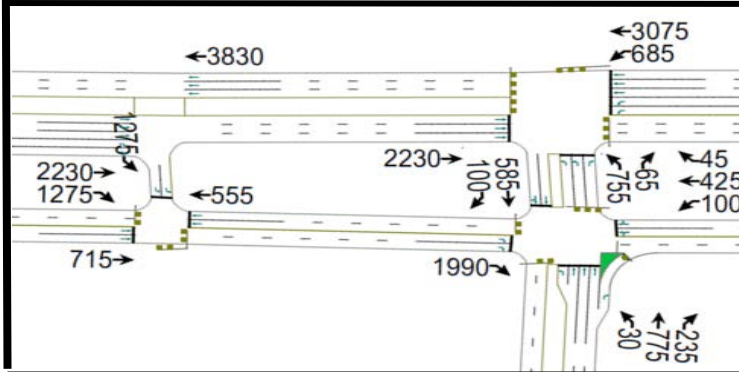
PM



AM

2040 Improved

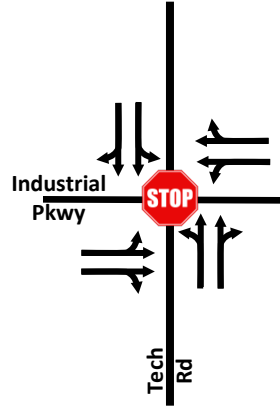
PM



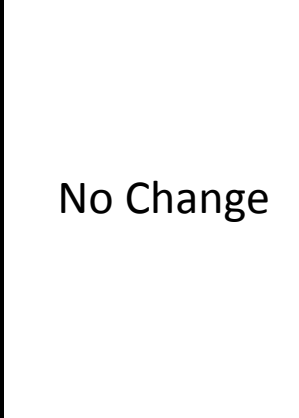
Tech Road and Industrial Parkway



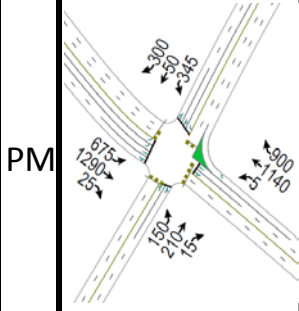
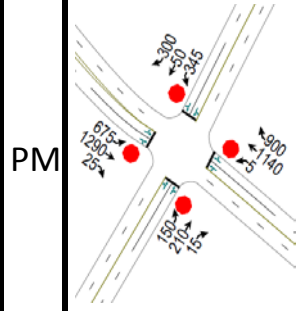
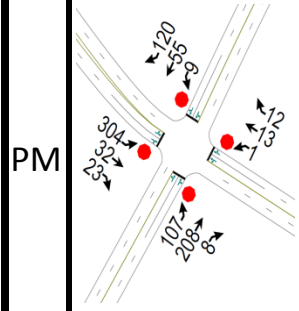
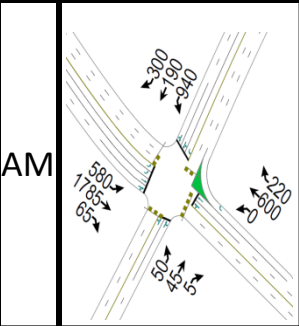
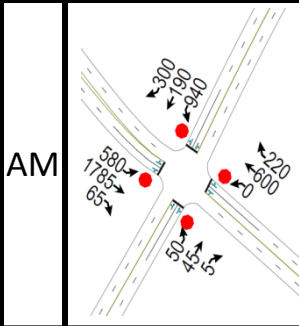
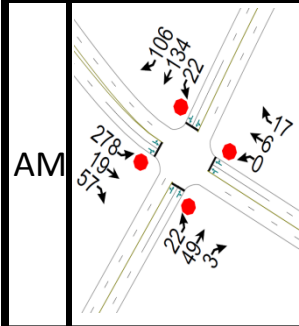
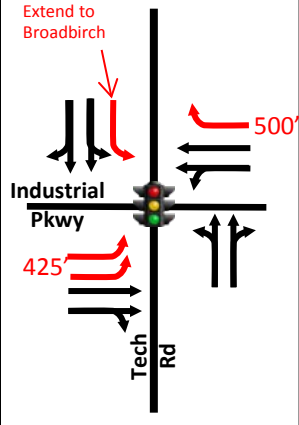
Existing Conditions



2040



2040 Improved



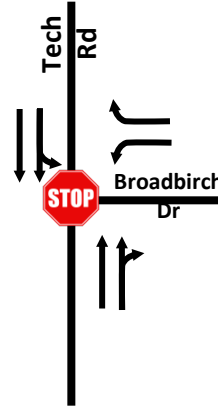
*Recommended Improvements █

Tech Road and Broadbirch Drive

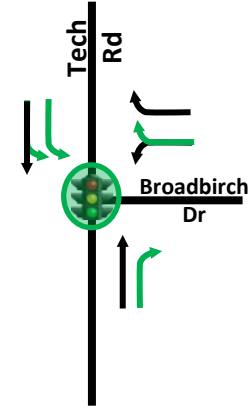


© 2016 Europa Technologies

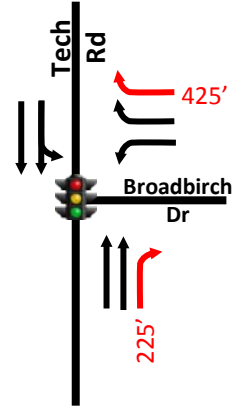
Existing Conditions



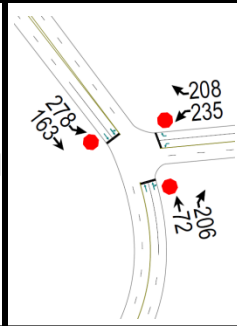
2040 Hospital Improvements



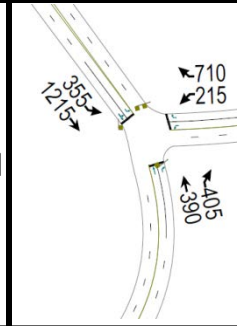
2040 Improved



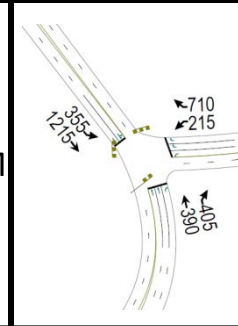
AM



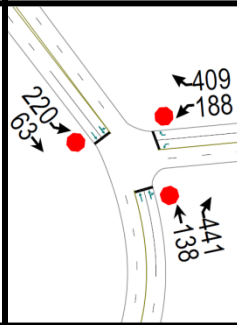
AM



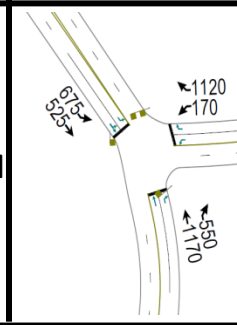
AM



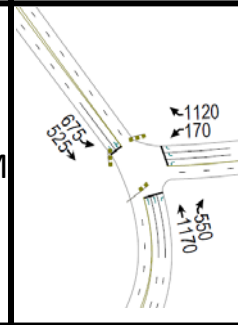
PM



PM



PM

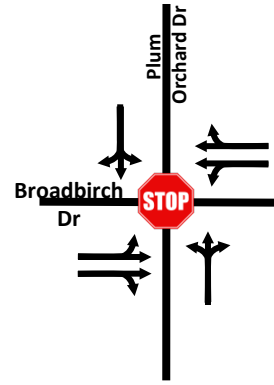


*Original Hospital TIS Improvements █
 *Recommended Improvements █

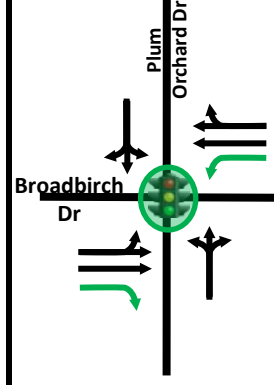
Broadbirch Drive and Plum Orchard Drive



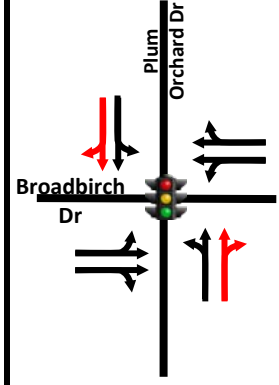
Existing Conditions



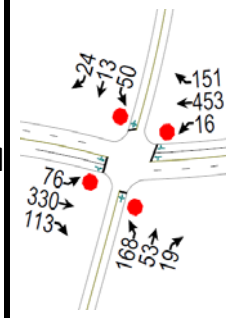
2040 Hospital Improvements



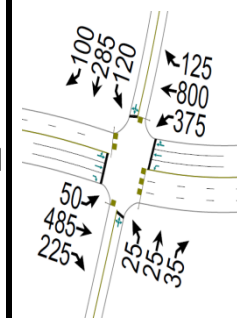
2040 Improved



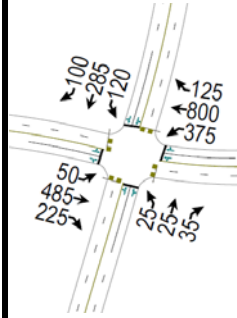
AM



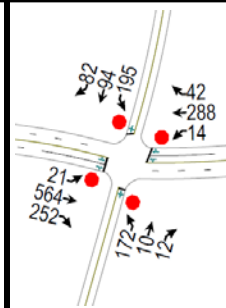
AM



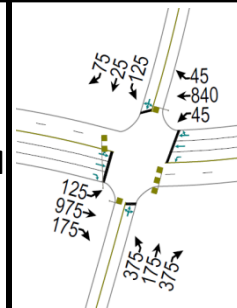
AM



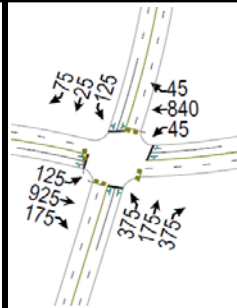
PM



PM



PM

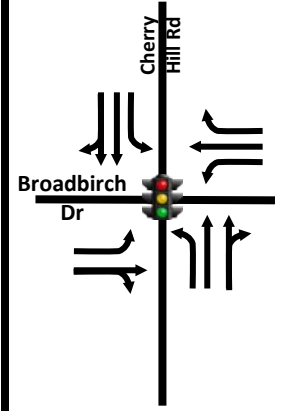


*Original Hospital TIS Improvements █
 *Recommended Improvements █

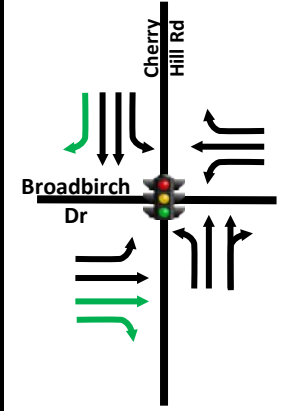
Cherry Hill Road and Broadbirch Drive



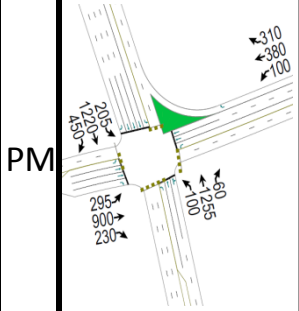
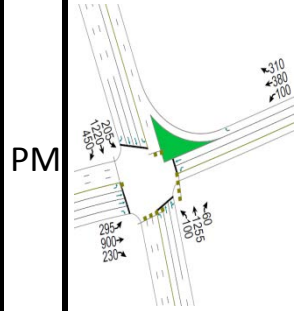
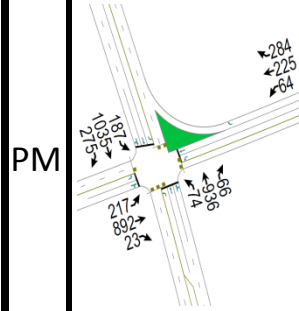
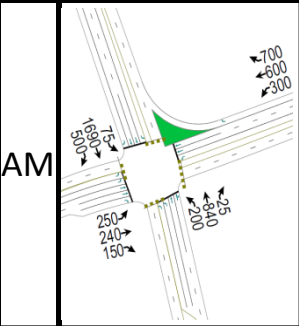
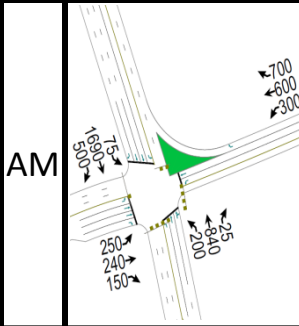
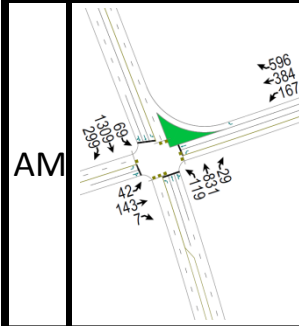
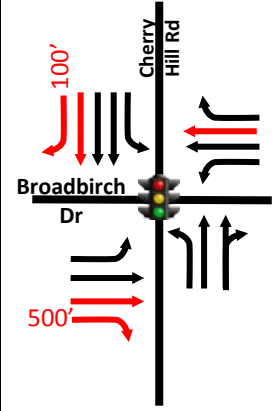
Existing Conditions



2040 Hospital Improvements



2040 Improved



*Original Hospital TIS Improvements █
 *Recommended Improvements █

Cherry Hill Road and Plum Orchard Dr



Existing Conditions		2040 Hospital Improvements	2040 Improved		
			No Change		
AM		AM		AM	
PM		PM		PM	

*Original Hospital TIS Improvements █

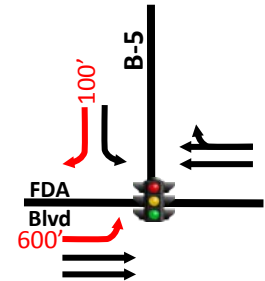
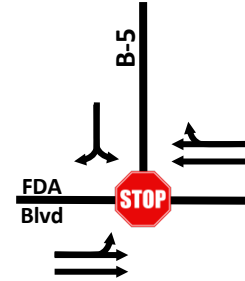
FDA Boulevard and B-5

Existing Conditions

2040

2040 Improved

Not
Applicable



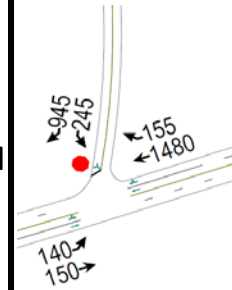
B-5

FDA Dr

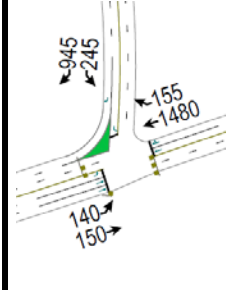
AM

Not
Applicable

AM



AM



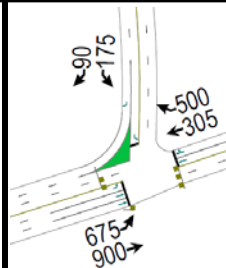
PM

Not
Applicable

PM



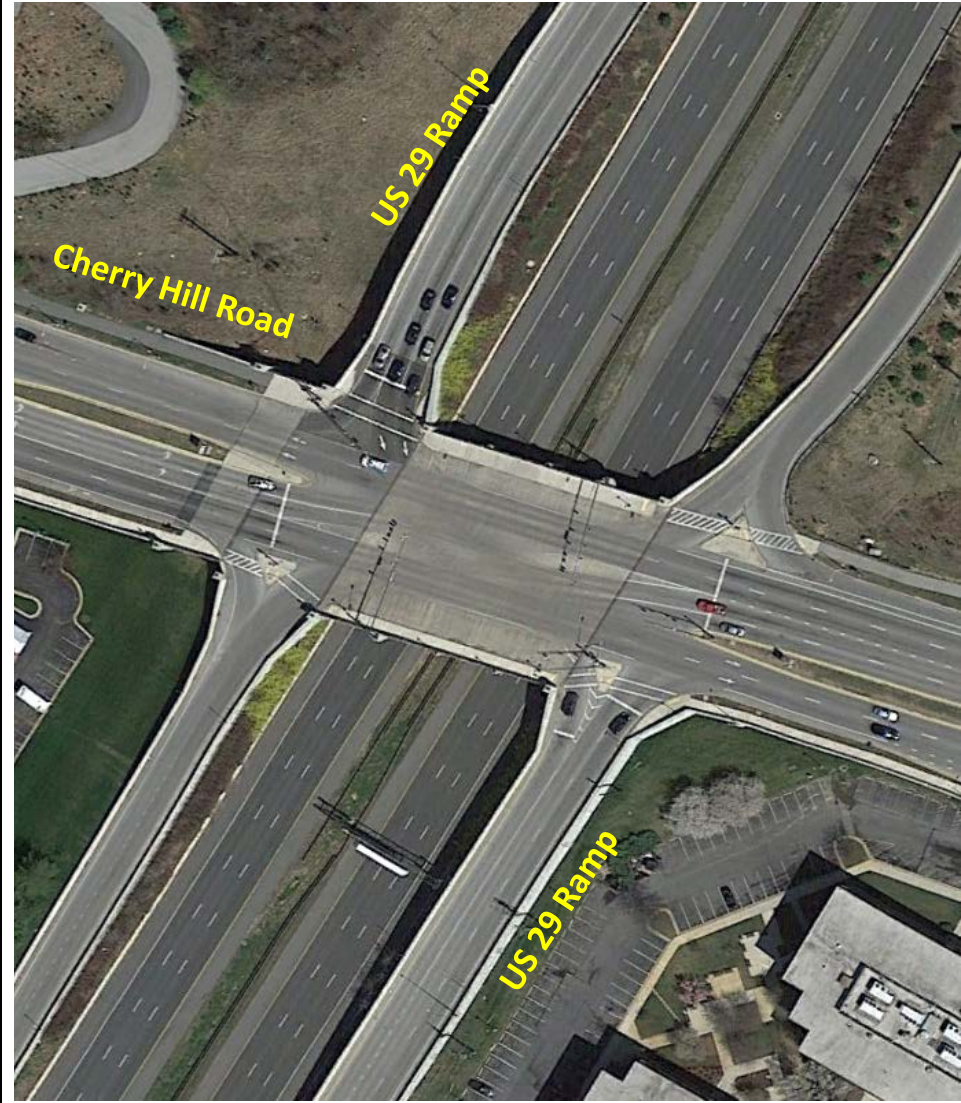
PM



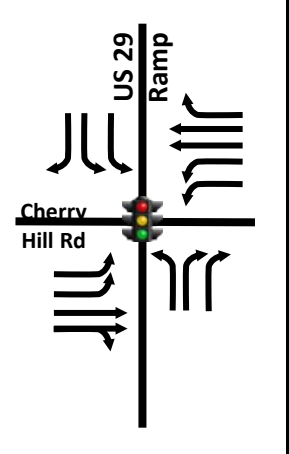
*Recommended Improvements



Cherry Hill Road and US 29 Ramps



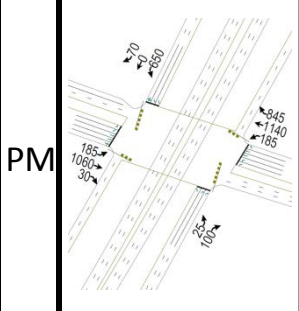
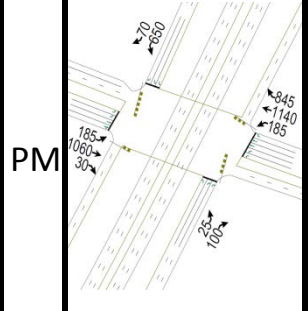
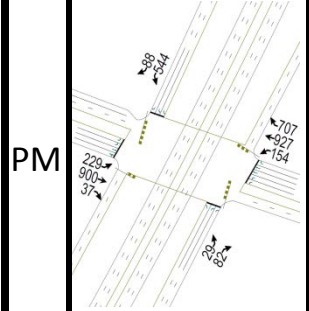
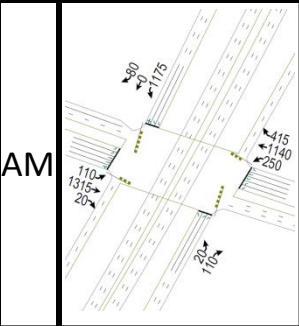
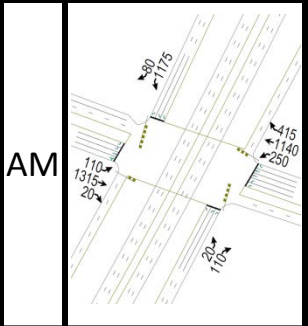
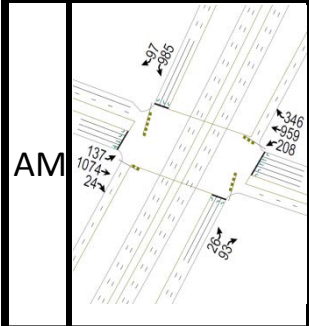
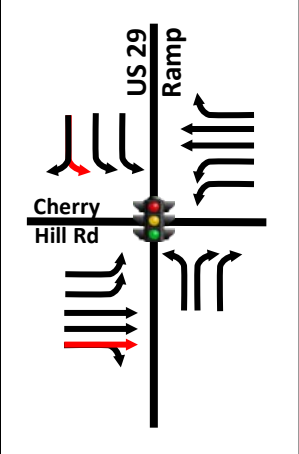
Existing Conditions



2040



2040 Improved



*Recommended Improvements █